

**Loeve&Co**

**1-54 Art Fair 2026  
New-York**

**Booth N°6**

**May 13th to May 17th**

**Starrett-Lehigh Building**

**600 W. 27th St**

**Manhattan, New York**



LOEC  
VE&O

## Alex Burke (France, 1944)

### Exhibitions:

Museo de Arte  
Latinoamericano, Buenos  
Aires  
7th and 10th Havana Bien-  
nials, Cuba  
*Infinite Island*, Brooklyn  
Museum, New York  
*Les Choses*, Musée du Louvre,  
Paris  
*Paris Noir*, Centre Pompidou,  
Paris  
*L'Un et l'Autre*, Palais de  
Tokyo, Paris  
8th and 10th Taipei Biennials,  
Taiwan

### Collections:

FRAC Normandie, Caen  
FRAC Centre-Val de Loire,  
Orléans  
Centre Pompidou, Paris  
Fonds National d'Art  
Contemporain, Paris  
Fonds de dotation Jean-  
Jacques Lebel, Paris  
Kunstmuseum St. Gallen,  
St. Gallen

Born in Fort-de-France, Burke left Martinique — which at the time had no public art school — to study Fine Arts in Nancy. It was there that he discovered the progressive New York troupe The Bread and Puppet Theatre. Deeply political, Burke's work has since frequently employed the transitional metaphor of the puppet to express his committed perspective on urgent themes such as colonialism, social injustice, and cultural exploitation, while celebrating the richness and diversity of the Indigenous cultures of the Americas, capturing the very essence of the communal memory of peoples forgotten by history.

The evolution of his work — from the boxes, fragments of architecture, and archaeological remnants that, by the late 1970s, led him to explore his individual and collective identity and the history of the Americas, to the mannequins and dolls, akin to Kachina figures, which he fashions from reclaimed fabrics bearing multiple histories, origins, and motifs — has anticipated many of the concerns that are now central in contemporary art.

Each of his works carries the necessity of honoring oral traditions and challenging our perception of the “New World,” in order to recover the echoes of what existed before the crossing of the oceans.

15, rue des Beaux-Arts  
Fr-75006 Paris  
Du mardi au samedi  
de 14h à 19h  
www.loeveandco.com  
and@loeveandco.com  
+33 1 42 01 05 70

---

# Loeve&Co

---

## Alex Burke (born in 1944)

**Prices are ex taxes**

---

**Alex Burke**

*X on the lace*

Circa 1980

Mixed media on wood

39 3/4 × 19 11/16 × 2 3/4 in

---

**Price**

20 000 euros

23 500 USD







15, rue des Beaux-Arts  
Fr-75006 Paris  
Du mardi au samedi  
de 14h à 19h  
www.loeveandco.com  
and@loeveandco.com  
+33 1 42 01 05 70

# Loeve&Co

## Alex Burke (born in 1944)

---

**Alex Burke***Untitled*

Circa 1980

Mixed media on wood

Signed on the back

47 1/4 × 25 9/16 × 2 in

---

**Price**

30 000 euros

35 000 USD



15, rue des Beaux-Arts  
Fr-75006 Paris  
Du mardi au samedi  
de 14h à 19h  
www.loeveandco.com  
and@loeveandco.com  
+33 1 42 01 05 70

# Loeve&Co

## Alex Burke (born in 1944)

---

**Alex Burke***Gaure*

1978

Mixed media on wood

Titled, signed and dated on the back

44 7/8 × 35 7/16 × 4 3/4 in

---

**Price**

40 000 euros

47 000 USD



15, rue des Beaux-Arts  
Fr-75006 Paris  
Du mardi au samedi  
de 14h à 19h  
www.loeveandco.com  
and@loeveandco.com  
+33 1 42 01 05 70

# Loeve&Co

---

**Alex Burke (born in 1944)**

---

**Alex Burke**

*Untitled*

1992

Mixed media on wood

Signed and dated on the back

9 7/16 × 26 3/8 × 2 3/4 in

---

**Price**

12 000 euros

14 000 USD



15, rue des Beaux-Arts  
Fr-75006 Paris  
Du mardi au samedi  
de 14h à 19h  
www.loeveandco.com  
and@loeveandco.com  
+33 1 42 01 05 70

# Loeve&Co

## Alex Burke (born in 1944)

**Alex Burke**

*Untitled (Dolls)*

2026

Mixed media, fabrics and plexiglass

23 5/8 × 23 5/8 × 5 15/16 in

Price

15 000 euros

17 500 USD





Installation view, exhibition Paris Noir, Centre Pompidou, Paris, 2025. Works from Alex Burke



**LOEC  
VE&O**

## **Frédérique Devaux Yahi (Algérie/France, 1956)**

### **Exhibitions:**

*Poésure et Peintrie, Vieille  
Charité, Marseille*  
*Rewriting the World : Isidore  
Isou and the Lettrist Book,*  
Center for Book Arts,  
New-York  
*Portraits et Autoportraits... ,*  
FRAC, Pays de Loire  
*Parcours Lettriste - 45ème*  
Biennale de Venise, Venise

### **Collections:**

EAMC, Berlin  
The Ruth & Marvin Sackner  
Archive of Concrete and  
Visual Poetry, Iowa City  
Centre National du cinéma et  
de l'image animée, Paris  
Centre Pompidou, Paris  
Light  
Cone, Paris

Frédérique Devaux Yahi develops, alongside her cinematic work, an artistic practice rooted in the field of Lettrism. Her visual work is built on a particular attention to the sign, rhythm, and the materiality of the image, drawing both from Lettrist research and from a cultural sensibility deeply shaped by her Kabyle roots.

Her work is part of a non-Western approach to representation, in which the repetition of the sign, frontality, and symbolic inscription echo the visual traditions of North Africa and, more broadly, African arts—particularly in their relationship to the sign, the body, and space.

Frédérique Devaux Yahi's Lettrist photographic works, produced mainly between 1981 and 1991, have been presented in numerous group exhibitions dedicated to Lettrism, both in France and internationally. These presentations have helped to highlight a body of work in which formal experimentation engages in dialogue with extra-Western cultural heritages, asserting an aesthetic that is both radical and grounded.

Through her artistic practice, Frédérique Devaux Yahi proposes a singular articulation between the European avant-garde and North African cultural memories, situating her work within an expanded history of contemporary art—one that is attentive to the circulation between cultures, to symbolic forms, and to visual languages emerging from the African continent and its diaspora.



15, rue des Beaux-Arts  
Fr-75006 Paris  
Du mardi au samedi  
de 14h à 19h  
www.loeveandco.com  
and@loeveandco.com  
+33 1 42 01 05 70

# Loeve&Co

## Frédérique Devaux Yahi (born in 1956)

---

**Frédérique Devaux Yahi**

*Untilted*

1988

Mixed media on canvas

Signed, dated and numeroted lower right

40 3/16 × 26 3/8 in

---

**Price**

6 000 euros

7 000 USD



15, rue des Beaux-Arts  
Fr-75006 Paris  
Du mardi au samedi  
de 14h à 19h  
www.loeveandco.com  
and@loeveandco.com  
+33 1 42 01 05 70

# Loeve&Co

## Frédérique Devaux Yahï (born in 1956)

---

**Frédérique Devaux Yahï**

*Tissage-fromage*

1984

Photographic print

Signed, dated and titled on the back

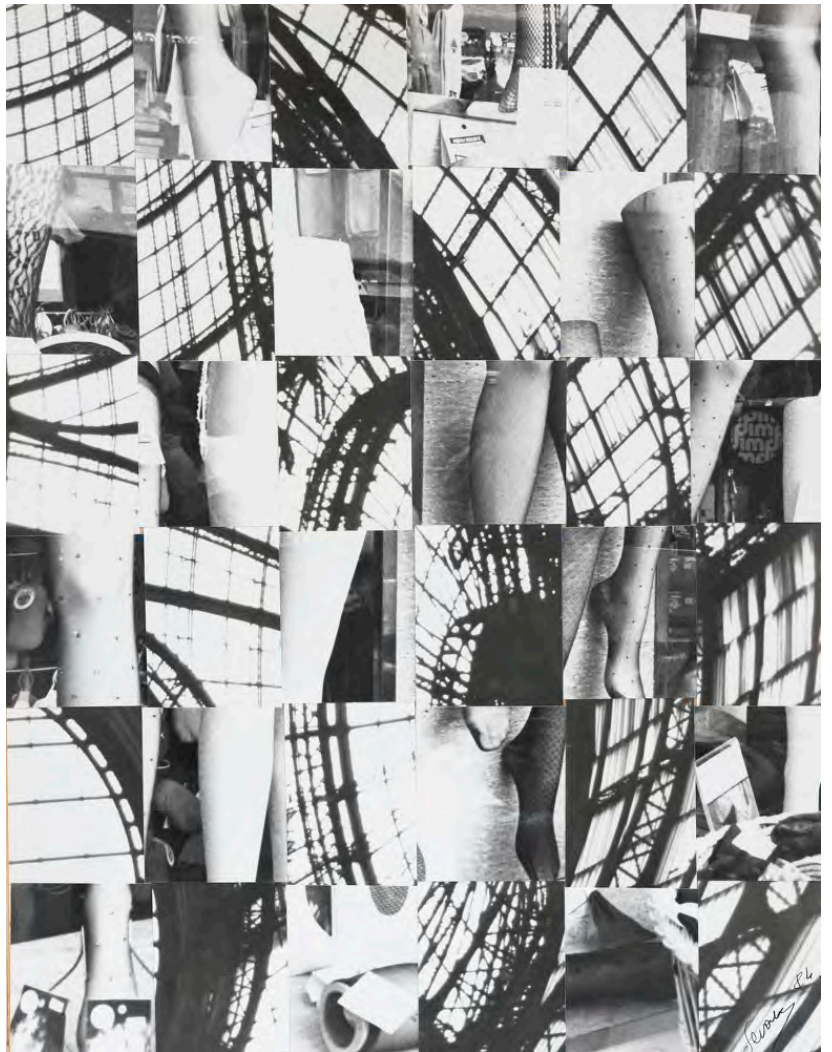
12 3/16 × 9 7/16 in

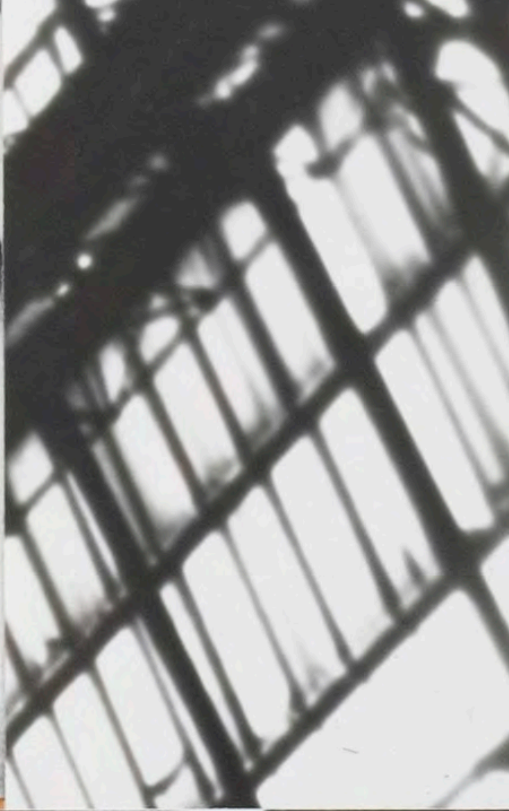
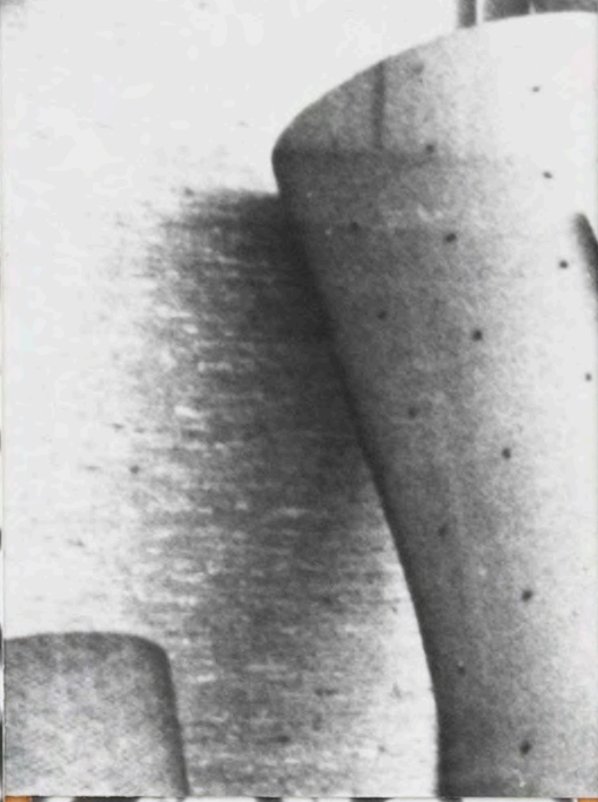
---

**Price**

2 500 euros

3 000 USD





15, rue des Beaux-Arts  
Fr-75006 Paris  
Du mardi au samedi  
de 14h à 19h  
www.loeveandco.com  
and@loeveandco.com  
+33 1 42 01 05 70

# Loeve&Co

## Frédérique Devaux Yahï (born in 1956)

---

### Frédérique Devaux Yahï

*Portrait de MA*

1986

Mixed media on photographic print

Signed, dated and titled on the back

15 3/4 × 11 13/16 in

---

### Price

2 500 euros

3 000 USD



15, rue des Beaux-Arts  
Fr-75006 Paris  
Du mardi au samedi  
de 14h à 19h  
www.loeveandco.com  
and@loeveandco.com  
+33 1 42 01 05 70

# Loeve&Co

## Frédérique Devaux Yahi (born in 1956)

---

### Frédérique Devaux Yahi

*Portrait de MA*

1986

Mixed media on photographic print

Signed, dated and titled on the back

15 3/4 × 11 13/16 in

---

### Price

2 500 euros

3 000 USD



15, rue des Beaux-Arts  
Fr-75006 Paris  
Du mardi au samedi  
de 14h à 19h  
www.loeveandco.com  
and@loeveandco.com  
+33 1 42 01 05 70

# Loeve&Co

## Frédérique Devaux Yahi (born in 1956)

---

### Frédérique Devaux Yahi

#### *Reliefs*

1988

Mixed media on photographic print

Titled, dated and signed on the back

14 15/16 × 11 7/16 in

---

#### Price

2 500 euros

3 000 USD



15, rue des Beaux-Arts  
Fr-75006 Paris  
Du mardi au samedi  
de 14h à 19h  
www.loeveandco.com  
and@loeveandco.com  
+33 1 42 01 05 70

# Loeve&Co

## Frédérique Devaux Yahï (born in 1956)

---

**Frédérique Devaux Yahï**

*Portraits Reliefs*

1988

Mixed media on photographic print

Titled and dated on the back

15 3/4 × 11 in

---

**Price**

3 000 euros

3 500 USD



15, rue des Beaux-Arts  
Fr-75006 Paris  
Du mardi au samedi  
de 14h à 19h  
www.loeveandco.com  
and@loeveandco.com  
+33 1 42 01 05 70

# Loeve&Co

## Frédérique Devaux Yahï (born in 1956)

**Frédérique Devaux Yahï**  
*Untitled (Amsterdam)*

1987  
Gouache on photographic print  
Signed and dated on the back  
9 7/16 × 11 7/16 in

**Price**

2 000 euros  
2 300 USD



15, rue des Beaux-Arts  
Fr-75006 Paris  
Du mardi au samedi  
de 14h à 19h  
www.loeveandco.com  
and@loeveandco.com  
+33 1 42 01 05 70

# Loeve&Co

## Frédérique Devaux Yahï (born in 1956)

**Frédérique Devaux Yahï**  
*Untitled (Amsterdam)*

1987  
Gouache on photographic print  
Signed and dated on the back  
9 7/16 × 11 7/16 in

---

**Price**

2 000 euros  
2 300 USD



15, rue des Beaux-Arts  
Fr-75006 Paris  
Du mardi au samedi  
de 14h à 19h  
www.loeveandco.com  
and@loeveandco.com  
+33 1 42 01 05 70

# Loeve&Co

## Frédérique Devaux Yahï (born in 1956)

---

### Frédérique Devaux Yahï

*Copygrammes*

1988

Photographic print

Signed, dated and titled on the back

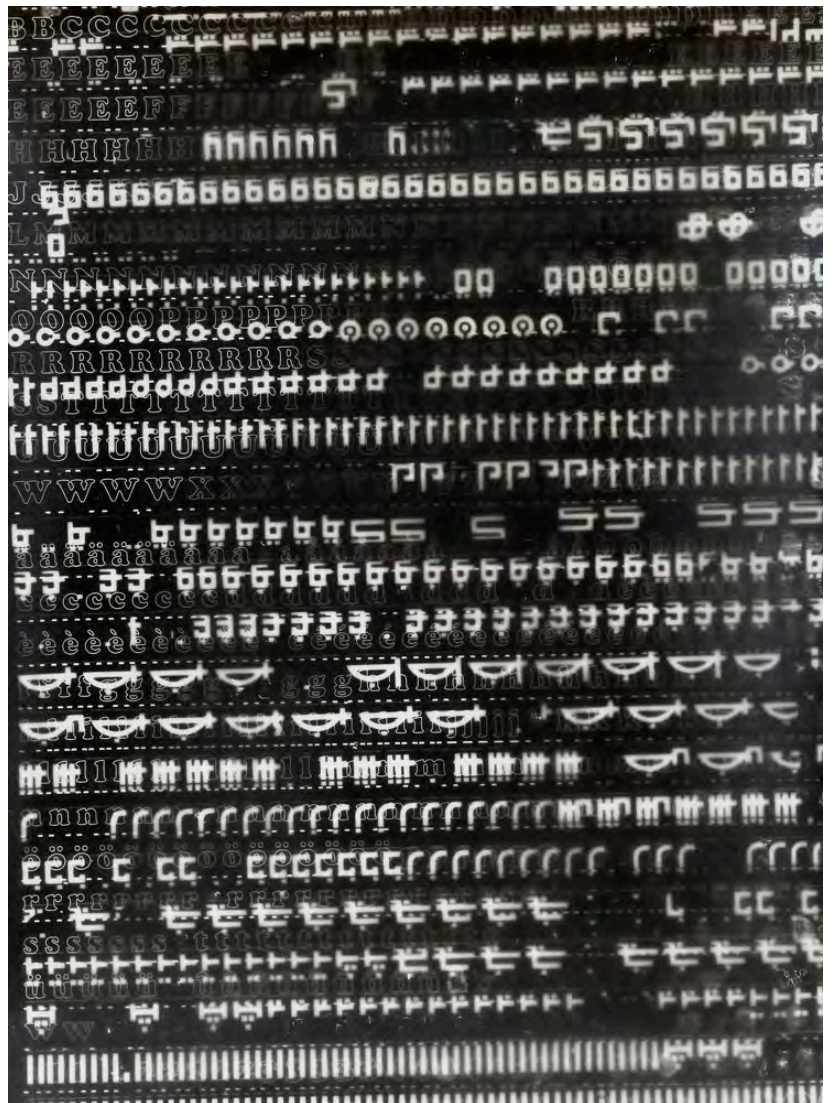
11 13/16 × 9 7/16 in

---

### Price

2 000 euros

2 300 USD



15, rue des Beaux-Arts  
Fr-75006 Paris  
Du mardi au samedi  
de 14h à 19h  
www.loeveandco.com  
and@loeveandco.com  
+33 1 42 01 05 70

# Loeve&Co

---

## Frédérique Devaux Yahï (born in 1956)

---

**Frédérique Devaux Yahï**

*Signogrammes*

1988

Photographic print

Signed, dated and titled on the back

11 13/16 × 9 7/16 in

---

**Price**

2 500 euros

3 000 USD





15, rue des Beaux-Arts  
Fr-75006 Paris  
Du mardi au samedi  
de 14h à 19h  
www.loeveandco.com  
and@loeveandco.com  
+33 1 42 01 05 70

# Loeve&Co

## Frédérique Devaux Yahi (born in 1956)

---

**Frédérique Devaux Yahi**

*Untitled (Création Novation -  
Isidore Isou)*

1989

Mixed media on photographic print

Signed and dated lower right

29 1/2 × 19 11/16 in

---

**Price**

5 500 euros

6 500 USD





LOEC  
VE&O

## Roland Dorcély (Haiti, 1930-2017)

### Exhibitions:

*New Images of Man*, Blum & Poe Gallery, Los Angeles  
*Paris Noir*, Centre Pompidou, Paris

### Collections:

Boca Raton Museum of Art, Boca Raton  
NSU Art Museum, Fort Lauderdale  
Hood Museum of Art, Dartmouth College, Hanover  
Brooklyn Museum, New York  
MoMA, New York  
Musée national d'art moderne, Centre Pompidou, Paris  
Fonds National d'Art Contemporain, Paris  
Fonds de dotation Jean-Jacques Lebel, Paris  
Davis Museum, Wellesley College, Wellesley

Although born into a modest background, Dorcély's artistic talents were recognized and encouraged from an early age. In 1950, convinced that Haitian artists were not destined to produce only naïve or folkloric work but should take part in modernity, he co-founded the *Foyer des Arts plastiques* in Port-au-Prince and received commissions for murals — notably for the Hollywood residence of producer David O. Selznick — while Jean-Paul Sartre published his poems in *Les Temps Modernes*.

After a stay in Paris, where he refined his technique in Fernand Léger's studio, Dorcély settled in Europe from 1958 onward, moving in the circles of Michel Leiris, Picasso, and art dealer Daniel-Henry Kahnweiler, who in 1961 published his bibliophile book *S.O.S.*

Most often of medium format and painted in oil or tempera, Dorcély's exuberant landscapes, still lifes, and female nudes — frequently seated on or interacting with a chair — stand out for their vigorous composition and vibrant palette of pure, unmixed colors. Representative of this style, his *Nu à la chaise* (1958), titled *When to Relax?*, entered the collection of the MoMA in New York that same year.

However, short of resources — his two solo exhibitions in Paris galleries in 1960 were complete commercial failures — Dorcély accepted a teaching position in Conakry, Guinea. He soon returned abruptly, leaving his paintings behind, and went back to Haiti in 1962. Suffering from psychological difficulties, Dorcély subsequently withdrew even from his friends and from the Haitian art scene, ceasing to produce work except on rare occasions.

15, rue des Beaux-Arts  
Fr-75006 Paris  
Du mardi au samedi  
de 14h à 19h  
www.loeveandco.com  
and@loeveandco.com  
+33 1 42 01 05 70

# Loeve&Co

## Roland Dorcély (1930-2017)

**Roland Dorcély**

*Morning Coffee*

Circa 1958

Oil on canvas

Signed lower left

15 3/4 × 23 5/8 in

Price

24 000 euros

28 000 USD





15, rue des Beaux-Arts  
Fr-75006 Paris  
Du mardi au samedi  
de 14h à 19h  
www.loeveandco.com  
and@loeveandco.com  
+33 1 42 01 05 70

# Loeve&Co

## Roland Dorcély (1930-2017)

**Roland Dorcély**

*Untitled (Nude in Front of a Mirror)*

Circa 1958

Oil on canvas

23 5/8 × 15 3/4 in

**Price**

24 000 euros

28 000 USD







APRIL 1971

15, rue des Beaux-Arts  
Fr-75006 Paris  
Du mardi au samedi  
de 14h à 19h  
www.loeveandco.com  
and@loeveandco.com  
+33 1 42 01 05 70

# Loeve&Co

## Roland Dorcély (1930-2017)

**Roland Dorcély**  
*Untitled (Heads)*  
Circa 1958  
Oil on canvas  
Signed upper right  
23 5/8 × 15 3/4 in

**Price**  
24 000 euros  
28 000 USD





**Paul Klee**  
1879-1940  
Swiss  
1925-1926  
Paris  
1927-1928  
Paris  
1929-1930  
Paris  
1931-1932  
Paris  
1933-1934  
Paris  
1935-1936  
Paris  
1937-1938  
Paris  
1939-1940  
Paris  
1941-1942  
Paris  
1943-1944  
Paris  
1945-1946  
Paris  
1947-1948  
Paris  
1949-1950  
Paris  
1951-1952  
Paris  
1953-1954  
Paris  
1955-1956  
Paris  
1957-1958  
Paris  
1959-1960  
Paris  
1961-1962  
Paris  
1963-1964  
Paris  
1965-1966  
Paris  
1967-1968  
Paris  
1969-1970  
Paris  
1971-1972  
Paris  
1973-1974  
Paris  
1975-1976  
Paris  
1977-1978  
Paris  
1979-1980  
Paris  
1981-1982  
Paris  
1983-1984  
Paris  
1985-1986  
Paris  
1987-1988  
Paris  
1989-1990  
Paris  
1991-1992  
Paris  
1993-1994  
Paris  
1995-1996  
Paris  
1997-1998  
Paris  
1999-2000  
Paris  
2001-2002  
Paris  
2003-2004  
Paris  
2005-2006  
Paris  
2007-2008  
Paris  
2009-2010  
Paris  
2011-2012  
Paris  
2013-2014  
Paris  
2015-2016  
Paris  
2017-2018  
Paris  
2019-2020  
Paris  
2021-2022  
Paris  
2023-2024  
Paris  
2025-2026  
Paris

**Roland Dorcély**  
1925-1998  
French  
1945-1946  
Paris  
1947-1948  
Paris  
1949-1950  
Paris  
1951-1952  
Paris  
1953-1954  
Paris  
1955-1956  
Paris  
1957-1958  
Paris  
1959-1960  
Paris  
1961-1962  
Paris  
1963-1964  
Paris  
1965-1966  
Paris  
1967-1968  
Paris  
1969-1970  
Paris  
1971-1972  
Paris  
1973-1974  
Paris  
1975-1976  
Paris  
1977-1978  
Paris  
1979-1980  
Paris  
1981-1982  
Paris  
1983-1984  
Paris  
1985-1986  
Paris  
1987-1988  
Paris  
1989-1990  
Paris  
1991-1992  
Paris  
1993-1994  
Paris  
1995-1996  
Paris  
1997-1998  
Paris

Installation view, exhibition Paris Noir, Centre Pompidou, Paris, 2025. Works from Roland Dorcély



**LOEC  
VE&O**

## **Guido Llinás (Cuba, 1923-2005)**

### **Exhibitions:**

*My Own Past, Afrodescendant Contributions to Cuban Art*, Cooper Gallery, Harvard, Museu Oscar Niemeyer, Curitiba

Kunstverein, Frechen  
*Wifredo Lam et Guido Llinás*, Galerie Ruta Correa, Friburg  
*Paris Noir*, Centre Pompidou  
*1st Paris Biennale*, Musée d'Art Moderne de la Ville de Paris

5th and 6th *São Paulo Biennales*, Museu de Arte Moderna, São Paulo

### **Collections:**

Museo Nacional de Bellas Artes, Havana  
Art Museum, Fort Lauderdale  
Pérez Art Museum, Miami  
Kendall Art Cultural Center, Miami  
Frost Art Museum, Miami  
Ella Fontanals-Cisneros Collection, Miami/Madrid  
Brooklyn Museum, New York  
Centre Pompidou, Paris

Recently featuring in the 'Paris Noir' exhibition at the Centre Pompidou in 2025 with 5 works, and acquired by the Musée National d'Art Moderne that same year, Guido Llinás (1923–2005) is receiving renewed institutional attention.

His work is currently on view at the Venice Biennale, at the invitation of Cuban artist María Magdalena Campos-Pons (exhibition *Resonance*, Fondazione Marchesani), and will be featured in an upcoming solo exhibition at the Zentrum Paul Klee in Bern.

Born in Pinar del Río, Cuba, he was a co-founder of the avant-garde group Los Once in 1953, alongside Agustín Cárdenas, Antonio Vidal, Raúl Martínez, among others. During the 1950s, he made numerous trips to New York, where he came acquainted with Abstract Expressionism, in particular action painting by de Kooning and Motherwell. He left Cuba in 1963 for Paris with the help of Robert Altman, a patron of the arts whose son Roberto was part of the Lettrist movement. In Paris Llinás started his 'Black Paintings', reflecting on memory, History, and image production as a transatlantic dialogue between African culture and Western codes.

By appropriating abakuá signs — a visual language rooted in an Afro-Cuban secret society of Nigerian origin — and the gestures of action painting, Llinás creates an abstraction drawing from African roots, giving birth to his «black paintings», where his former collective, Los Once, had remained within the purely Western avant-garde tradition.

15, rue des Beaux-Arts  
Fr-75006 Paris  
Du mardi au samedi  
de 14h à 19h  
www.loeveandco.com  
and@loeveandco.com  
+33 1 42 01 05 70

# Loeve&Co

## Guido Llinás (1923-2005)

---

**Guido Llinas**

*Pintura Negra*

1971

Oil on hardboard

Signed and dated lower right

18 1/8 × 14 15/16 in

---

**Provenance**

The Guido Llinas Estate

---

**Price**

5 000 euros

6 000 USD





15, rue des Beaux-Arts  
Fr-75006 Paris  
Du mardi au samedi  
de 14h à 19h  
www.loeveandco.com  
and@loeveandco.com  
+33 1 42 01 05 70

# Loeve&Co

## Guido Llinás (1923-2005)

---

**Guido Llinas**

*Pintura Negra*

1974

Oil on canvas

Signed and dated lower right

15 3/4 × 15 3/4 in

---

**Provenance**

The Guido Llinas Estate

---

**Price**

5 000 euros

6 000 USD



15, rue des Beaux-Arts  
Fr-75006 Paris  
Du mardi au samedi  
de 14h à 19h  
www.loeveandco.com  
and@loeveandco.com  
+33 1 42 01 05 70

# Loeve&Co

## Guido Llinás (1923-2005)

---

**Guido Llinas**

*Pintura Negra*

1974

Oil on canvas

Signed and dated lower right

21 1/4 × 25 9/16 in

---

**Provenance**

The Guido Llinas Estate

---

**Price**

8 000 euros

9 000 USD



15, rue des Beaux-Arts  
Fr-75006 Paris  
Du mardi au samedi  
de 14h à 19h  
www.loeveandco.com  
and@loeveandco.com  
+33 1 42 01 05 70

---

# Loeve&Co

---

## Guido Llinás (1923-2005)

---

### Guido Llinás

*Pintura Negra*

1987

Mixed media on canvas

Signed and dated lower right

28 3/8 × 22 1/16 in

---

### Provenance

The Guido Llinas Estate

---

### Price

7 000 euros

8 000 USD



15, rue des Beaux-Arts  
Fr-75006 Paris  
Du mardi au samedi  
de 14h à 19h  
www.loeveandco.com  
and@loeveandco.com  
+33 1 42 01 05 70

# Loeve&Co

---

## Guido Llinás (1923-2005)

---

**Guido Llinas**

*Pintura Negra*

1978

Oil on canvas

Signed and dated lower right

31 7/8 × 39 3/8 in

---

**Provenance**

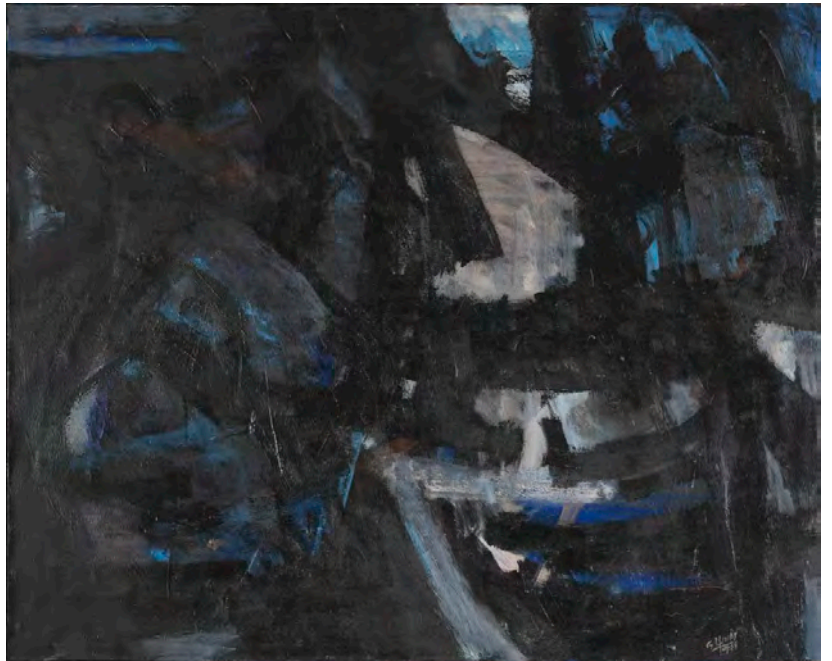
The Guido Llinas Estate

---

**Price**

14 000 euros

16 000 USD





15, rue des Beaux-Arts  
Fr-75006 Paris  
Du mardi au samedi  
de 14h à 19h  
www.loeveandco.com  
and@loeveandco.com  
+33 1 42 01 05 70

# Loeve&Co

## Guido Llinás (1923-2005)

---

**Guido Llinas**

*Untitled*

1980

Mixed media on canvas

Signed and dated lower right

18 1/8 × 13 in

---

**Provenance**

The Guido Llinas Estate

---

**Price**

4 000 euros

4 500 USD



15, rue des Beaux-Arts  
Fr-75006 Paris  
Du mardi au samedi  
de 14h à 19h  
www.loeveandco.com  
and@loeveandco.com  
+33 1 42 01 05 70

# Loeve&Co

---

## Guido Llinás (1923-2005)

---

### Guido Llinas

*Pintura Negra*

1981

Oil on canvas

Signed, dated and titled on the back

31 7/8 × 25 9/16 in

---

### Provenance

The Guido Llinas Estate

---

### Price

9 000 euros

10 500 USD





15, rue des Beaux-Arts  
Fr-75006 Paris  
Du mardi au samedi  
de 14h à 19h  
www.loeveandco.com  
and@loeveandco.com  
+33 1 42 01 05 70

# Loeve&Co

## Guido Llinás (1923-2005)

---

**Guido Llinas**

*Pintura Negra*

1999

Oil on canvas

Signed and dated lower right

39 3/8 × 31 7/8 in

---

**Provenance**

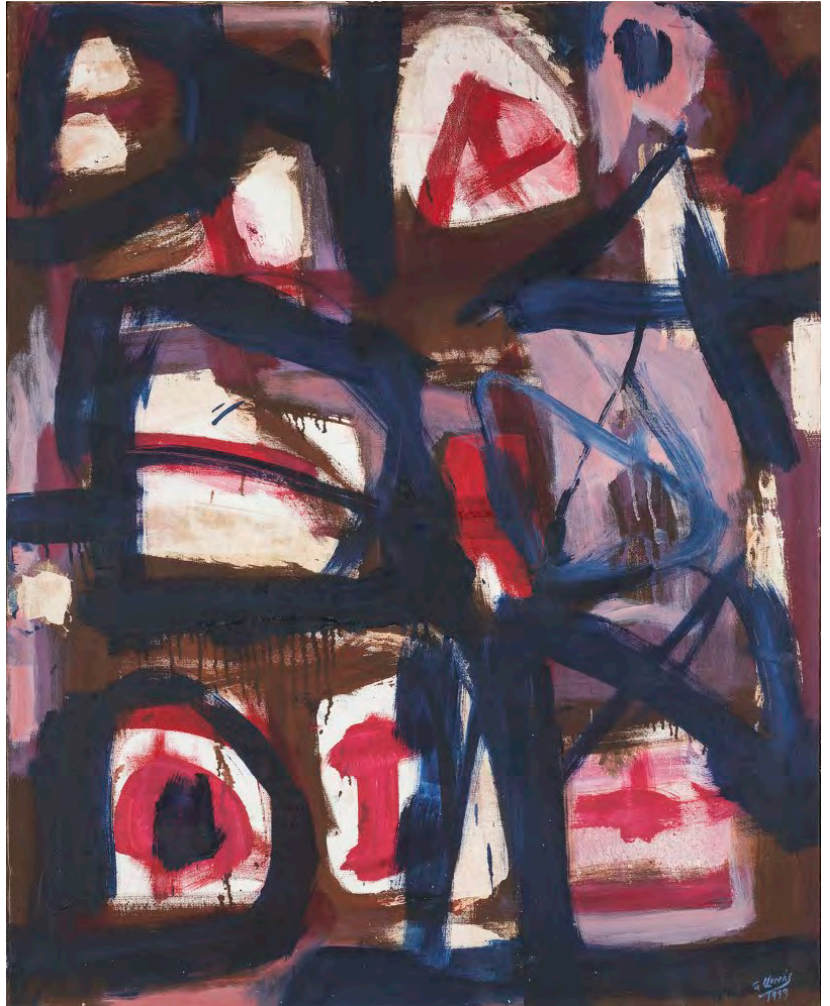
The Guido Llinas Estate

---

**Price**

12 000 euros

14 000 USD





LOEC  
VE&O

## Marcel Gotène (Congo, 1939-2013)

### Exhibitions:

*Festival mondial des Arts Nègres*, Dakar  
*Ile Biennale*, Musée d'Art Moderne, Paris  
*Modernités plurielles*, Centre Pompidou, Paris  
*Paris Noir*, Centre Pompidou, Paris

### Collections:

Fondation Gotène, Brazzaville  
CBH (Compagnie Bancaire Helvétique), Geneva  
MACAAL, Marrakech  
Musée du quai Branly-Jacques Chirac, Paris

Displaying his talent from an early age, Gotène attended the École de Poto-Poto in Brazzaville as a young teenager, where Pierre Lods supplied him with paint tubes and paper, allowing him complete freedom to express his own temperament. By 1953, he was exhibiting at the *Foire de Brazzaville* and distanced himself from Lods to embark on a solitary artistic path — including a three-month stay in the studio of master tapestry artist Jean Lurçat in Paris, thanks to a cooperation grant.

Recognized as one of the great masters of African pictorial modernity, Gotène is distinguished by the diversity of his painting, which ranges from snapshots of everyday life to mythological scenes, and at times ventures into abstraction. A learned and symbolic polychromy runs through all his work. “*Color is important*,” he said, “*but it only reinforces what I see: the fisherman and his fish, the peasant woman with her cassava tray, the dancers and their drum.*”

Whatever his subjects, Gotène’s art always returns to the emotions he felt during his first encounters with visual art — the painted totem poles at the entrances to villages, protecting inhabitants from bad dreams, illness, and spirits; the masks swelling into immense whirls above skirts of woven raffia; and above all, during official ceremonies, the faces of dignitaries or sorcerers painted in white and red clay, with broad violet lines encircling the mouth and dividing the forehead and chin vertically.

15, rue des Beaux-Arts  
Fr-75006 Paris  
Du mardi au samedi  
de 14h à 19h  
www.loeveandco.com  
and@loeveandco.com  
+33 1 42 01 05 70

# Loeve&Co

## Marcel Gotène (1939-2013)

**Marcel Gotène**

*Untitled*

1968

Oil on canvas

Signed and dated lower right

19 11/16 × 27 9/16 in

**Price**

9 500 euros

11 000 USD





15, rue des Beaux-Arts  
Fr-75006 Paris  
Du mardi au samedi  
de 14h à 19h  
www.loeveandco.com  
and@loeveandco.com  
+33 1 42 01 05 70

# Loeve&Co

## Marcel Gotène (1939-2013)

---

**Marcel Gotène**

*Untitled*

1990

Oil on canvas

Signed and dated upper left

23 5/8 × 31 1/2 in

---

**Price**

11 500 euros

13 500 USD





15, rue des Beaux-Arts  
Fr-75006 Paris  
Du mardi au samedi  
de 14h à 19h  
www.loeveandco.com  
and@loeveandco.com  
+33 1 42 01 05 70

# Loeve&Co

## Marcel Gotène (1939-2013)

**Marcel Gotène**

*Untitled*

Circa 1965

Gouache on paper

Signed lower center

11 13/16 × 14 9/16 in

Price

4 500 euros

5 500 USD



15, rue des Beaux-Arts  
Fr-75006 Paris  
Du mardi au samedi  
de 14h à 19h  
www.loeveandco.com  
and@loeveandco.com  
+33 1 42 01 05 70

# Loeve&Co

## Marcel Gotène (1939-2013)

**Marcel Gotène**

*Untitled*

circa 1965

Gouache on paper

Signed lower center

12 3/16 × 14 9/16 in à vue

**Price**

4 500 euros

5 500 USD





15, rue des Beaux-Arts  
Fr-75006 Paris  
Du mardi au samedi  
de 14h à 19h  
www.loeveandco.com  
and@loeveandco.com  
+33 1 42 01 05 70

# Loeve&Co

## Marcel Gotène (1939-2013)

**Marcel Gotène**

*Untitled*

Circa 1970

Gouache on paper

Signed lower right

9 7/16 × 13 in

**Price**

4 000 euros

5 500 USD





Installation view, exhibition Paris Noir, Centre Pompidou, Paris, 2025. Works from Marcel Gotène and François Thango



LOEC  
VE&O

## François Thango (Congo, 1936-1981)

### Exhibitions:

*Africa Hoy (Africa Now)*,  
Centro Atlántico de Arte  
Moderno, Las Palmas de Gran  
Canaria  
Groninger Museum,  
Groningen  
Centro Cultural de Arte  
Contemporáneo, Mexico City  
*Arts of Africa*, Grimaldi  
Forum, Monaco  
*Paris Noir*, Centre Pompidou,  
Paris  
Musée national des arts  
d'Afrique et d'Océanie, Paris  
*The Birth of Contemporary  
Painting in Central Africa*,  
Royal Museum for Central  
Africa, Tervuren

### Collections:

The Jean Pigozzi African Art  
Collection, Geneva  
The Blanchard Collection,  
New York  
Rolf Italiaander, Forum  
des Peuples, Reinbek

Spotted by Pierre Lods, who invited him to join the École de Poto-Poto in Brazzaville, Thango would regularly interrupt his life as an artist to spend time in the forest, where he delighted in returning to an ancestral way of life — in communion with the animal and plant worlds whose luxuriance he later transcribed into his works.

Thango did not paint on an easel, preferring paper or narrow rolls of canvas. His works are characterized by flat, outlined compositions; from time to time, he doubled his contours or employed a restrained method of modeling objects spread across vividly colored surfaces.

The pictorial space, sharply defined, is structured by figures and motifs that interlock, forming images of imagined primeval forests where the worlds of animals, plants, human figures, and stylized masks coexist.

15, rue des Beaux-Arts  
Fr-75006 Paris  
Du mardi au samedi  
de 14h à 19h  
www.loeveandco.com  
and@loeveandco.com  
+33 1 42 01 05 70

# Loeve&Co

## François Thango (1936-1981)

---

**François Thango**

*Untitled*

Circa 1955

Gouache on paper

Signed lower right

11 13/16 × 14 3/16 in

---

**Provenance**

Maine Durieux collection, Paris

---

**Price**

5 000 euros

6 000 USD

